

# Norwood Drive

## North Harrow, HA2

£2,500 per month

PAIGE &  
PETROOK



PAIGE PETROOK



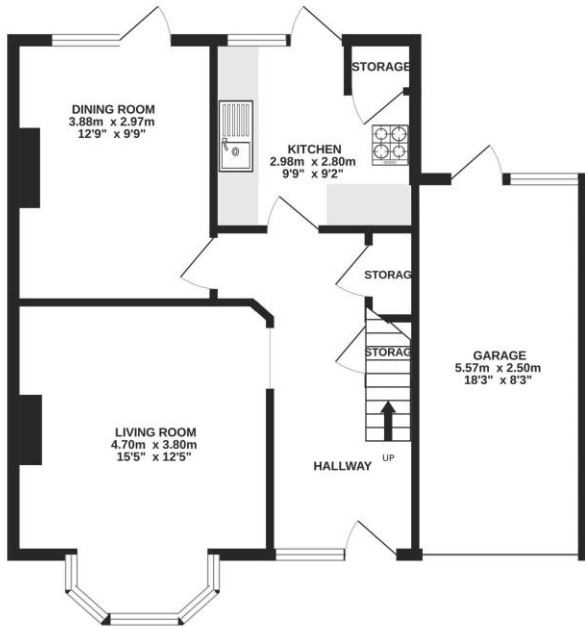
This recently refurbished, three double bedroom semi detached house within a short walk to Longfield Primary School and equal distance to both Rayners Lane and North Harrow underground stations.

Accommodation: entrance hall, lounge, dining room, large kitchen (with appliances ),,, master bedroom, bedroom two (both with fitted wardrobes), single bedroom, luxury fitted bathroom suite and bath with attachment. Benefits include; Gas/CH, D/Glazing, off street parking for two cars and rear garden with patio

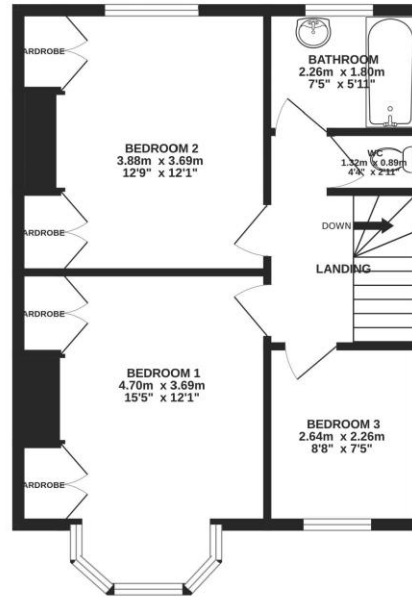




GROUND FLOOR  
60.4 sq.m. (650 sq.ft.) approx.



1ST FLOOR  
45.7 sq.m. (492 sq.ft.) approx.



TOTAL FLOOR AREA : 106.0 sq.m. (1141 sq.ft.) approx.

Whilst every attempt has been made to ensure the accuracy of the floorplan contained here, measurements of doors, windows, rooms and any other items are approximate and no responsibility is taken for any error, omission or mis-statement. This plan is for illustrative purposes only and should be used as such by any prospective purchaser. The services, systems and appliances shown have not been tested and no guarantee as to their operability or efficiency can be given.  
Made with Metropix ©2024





Energy Efficiency Rating		
	Current	Potential
<i>Very energy efficient - lower running costs</i>		
(92+) <b>A</b>		
(81-91) <b>B</b>		<b>86</b>
(69-80) <b>C</b>		
(55-68) <b>D</b>	<b>63</b>	
(39-54) <b>E</b>		
(21-38) <b>F</b>		
(1-20) <b>G</b>		
<i>Not energy efficient - higher running costs</i>		
<b>England, Scotland &amp; Wales</b>	EU Directive 2002/91/EC	

## Paige and Petrook

118-120 Marsh Road  
Pinner, Middlesex, HA5 5NA

T:

E:

[paigeandpetrook.co.uk](http://paigeandpetrook.co.uk)

Whilst every attempt has been made to ensure the accuracy of the floor plans contained here, measurements of doors, windows and rooms are approximate and no responsibility is taken for any error, omission or mis-statement. These plans are for representation purposes only as defined by RICS Code of Measuring Practice and should be used as such by any prospective purchaser. The services, systems and appliances listed in this specification have not been tested and no guarantee as to their operating ability or their efficiency can be given.



PAIGE &  
PETROOK